



TOMBOLO (INDOOR + OUTDOOR)

design Piero Lissoni - ready made by Studio UN pizzo

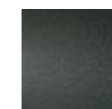
Armchair available for indoor and outdoor.

Indoor version: frame in tubular steel with chromed finish or with epoxy powder coating gunmetal grey color or in AISI 316 Stainless Steel matt satin-finish. Seat panel in lacquered steel with epoxy powder coating, padded in polyurethane foam (for chromed and lacquered versions) or in selfsupporting decorative HPL plastic laminate (for AISI 316 Stainless Steel version). Seat cushion in differentiated density polyurethane foam, covered with acrylic fibre layers.

Backrest cushion in preformed polyurethane foam covered with acrylic fibre layers. Fabric or leather upholstery, both fully removable by zippers, after unscrewing the seat panel from the frame (for chrome and lacquered version).

Outdoor version: tubular steel frame in AISI 316 Stainless Steel with matt satin- finish or AISI 316 Stainless Steel with epoxy powder coating gunmetal grey colour. Seat panel in self- supporting decorative HPL plastic laminate. Seat and backrest cushions padded with open-cell structure polyurethane foam DRYFEEL S and covered with fibre for outdoor, coated with waterproof fabric protection. Upholstery with outdoor fabrics only, fully removable by zippers. Both version woven with a hypoallergenic, recyclable, eco-friendly tubular, suitable both for indoor and outdoor, in colours in collection. Seat depth: 45cm.

Structure



Steel with
Gunmetal Grey
Coating
(In-Outdoor)

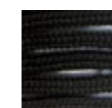


Steel with
Chromed-Plated
Finish
(Indoor)



Stainless Steel
with Matt
Satin Finish
(In-Outdoor)

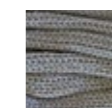
Weaving



Black Tubular
(In-Outdoor)



Green Tubular
(In-Outdoor)



Greige Tubular
(In-Outdoor)

Technical Drawings

